

# PARTS LEGEND

# IM50 F18

Part No. 013330 (EU), 013331 (UK)

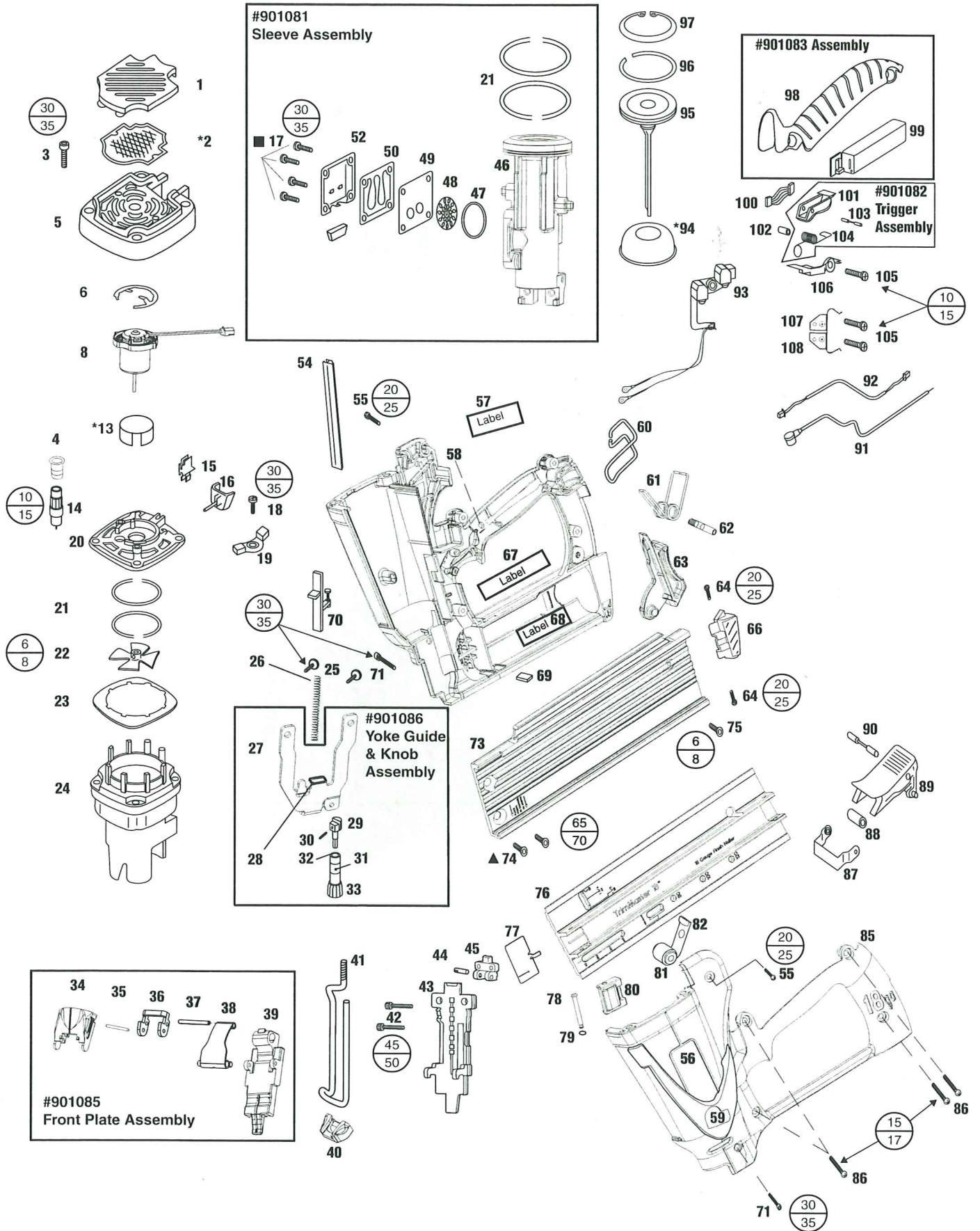
1	013715	1	Grill black	56	013707	2	Housing Label
*2	900648	1	Filter	57	013711	1	Nameplate
3	901064	4	S.H.C.S. 8-32 x 1-3/8"	58	404385	1	Light Pipe
4	900785	1	Spark Plug Sleeve	59	013714	2	P Handle Label
5	902011	1	Cap black	60	900289	1	Belt Hook
→6	901119	1	Retaining Ring	61	901019	1	Torsion Spring Magazine Latch
8	901112	1	Fan Motor Assembly	62	900353	1	Pivot Pin
* 13	401356	1	Motor Sleeve	63	901014	1	Magazine Latch Release
14	900714	1	Spark Plug Assembly	64	901061	2	Screw 6-32 x 3/16 BH
15	900674	1	Wire Clip	66	901013	1	Magazine End Cap
16	900697	1	Stem Adapter	67	013671	1	Warning Label Top
■ 17	405140	4	Screw 8-32 x 7/16" (red)	68	013672	1	Warning Label Bottom
18	900596	1	Screw, Sem 8-32 x 7/16"	69	404922	2	Battery Contact Pad
19	900739	1	Cylinder Head Circuit Board Ass.	70	901095	1	Switch Side Assembly
20	900605	1	Cylinder Head	→ 71	900792	2	Shoulder screw 8-32 x 15/82"
21	900612	4	Seal Ring	73	901084	1	Magazine Wear Strip Assembly
22	900709	1	Fan Assembly	▲ 74	900660	2	Screw 10-32 x 3/8"
23	900700	1	Air Dam	75	901062	1	Screw 6-32 x 1/8"
24	900729	1	Combustion Chamber Assembly	76	901012	1	Magazine Cover
25	900746	2	Screw 8-32 x 7/16 phtx	77	901015	1	Follower
26	901038	1	Spring	78	901018	1	Magazine Pin
27	901037	1	Yoke	79	901055	1	O-ring
28	901039	1	Yoke Support	80	901052	1	Spring Cover
29	901029	1	Yoke Guide	81	901016	1	Constant Force Spring
30	900734	1	Roll Pin	82	901017	1	Spool Spring
31	900645	1	Ball, Knob	85	013701	1	Handle assembly - Right & Left
32	900361	1	Retaining Clip	86	901066	4	Screw- Plastite
33	900727	1	Knob Assembly	87	900703	1	Handle Bracket
34	901009	1	Latch Cover Quick Clear	88	900755	1	Bushing Actuator
35	900685	1	Spring Pin	89	900788	1	Actuator Assembly
36	901005	1	Latch Clip	90	404433	1	Pin Actuator
37	901049	1	Spring Pin	91	900765	1	Spark Plug Wire Assembly
38	901006	1	Spring Clip Assembly	92	900663	1	Fan Wire Assembly
39	901002	1	Front Plate	93	901050	1	Molded Circuit Assembly
40	901048	1	Probe Tip	*94	901021	1	Piston Bumper
41	901007	1	Probe	95	901078	1	Piston Assembly
42	901026	2	Screw 10-24 x .75	96	901040	1	Piston Ring
43	901003	1	Back Plate	97	901036	1	Retaining Ring
44	901025	1	Support Pin	98	901044	1	Soft Grip
45	901004	1	Front Plate Support	99	900672	1	Electronic Spark Unit
46	901081	1	Sleeve Assembly	100	900662	1	ESU Power Wire Assembly
47	900616	1	O-Ring	101	901045	1	Trigger
48	901089	1	Exhaust Baffle	102	900608	1	Trigger Spring Bushing
49	900665	1	Reed Plate	103	901047	1	Trigger Pin
50	900664	1	Reed Valve	104	901053	1	Trigger Spring
51	900609	1	Muffler	105	404702	3	Screw 6-32 x 3/8"
52	900668	1	Muffler Cover	106	900629	1	HighTension Clip
54	901059	1	Front Channel	107	900312	1	Contact Positive
55	900598	2	Screw 10-32 x 5/16" (red)	108	900311	1	Contact Negative

■ Apply Loctite RC-620 (Green) Part No.401491

▲ Apply Loctite 277

\* Denotes Normal Wear Items

→ Denotes Change



TORQUE VALUES	
MIN	IN.LBS
MAX	

**⚠ WARNING**

All parts must be periodically inspected and replaced if worn or broken. Failure to do this can affect the tool's operation and present a safety hazard